

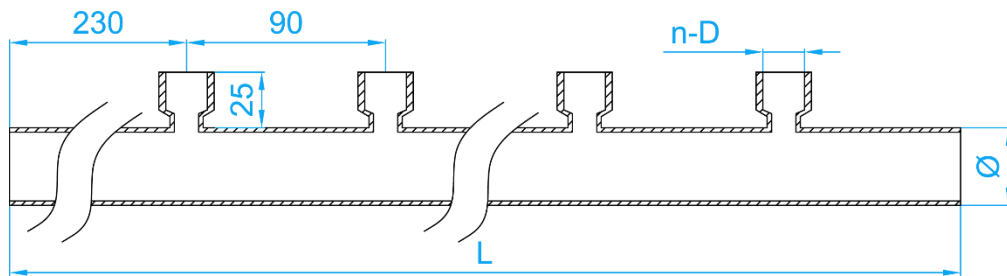
STAINLESS STEEL 316L PRESSFIT SINGLE SIDED MANIFOLDS



COMPLY WITH BSEN1254-2: 1998



norika
norika



CROSS SECTIONAL VIEW

* Size could be customized.

DIMENSIONS

SKU	Ø × Thickness (mm)	n-D	L (mm)	WEIGHT (kg)
SS316LNM03515FX04*	35 × 1.5	4NOS –G1/2" FI	1000	1.450

*This item requires special ordering. Please consult with a salesperson for the estimated lead time.